



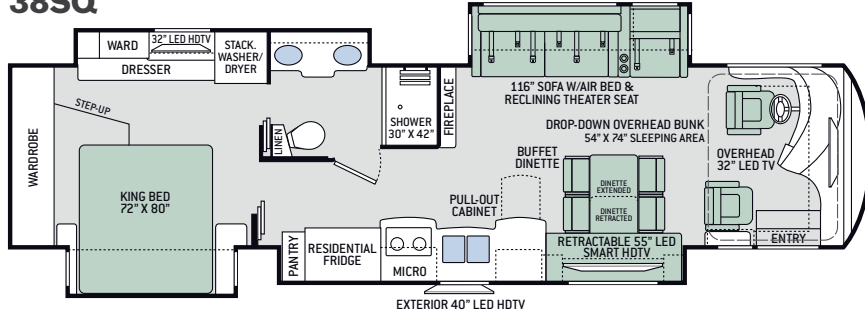
TUSCANY[®]

BY THOR MOTOR COACH

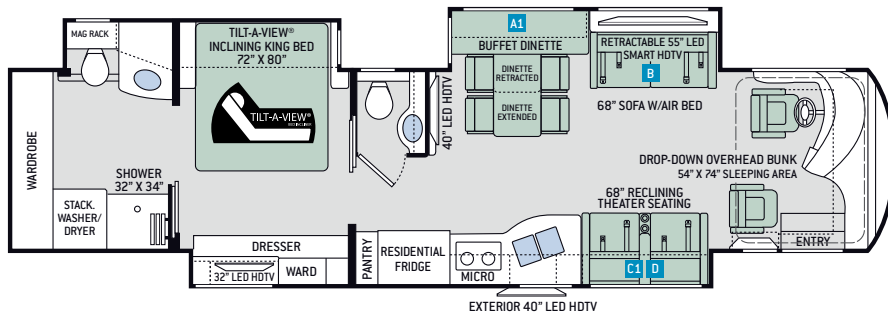
Tuscany, our most sophisticated Class A diesel motorhome made to fit your lifestyle.

Floor Plans

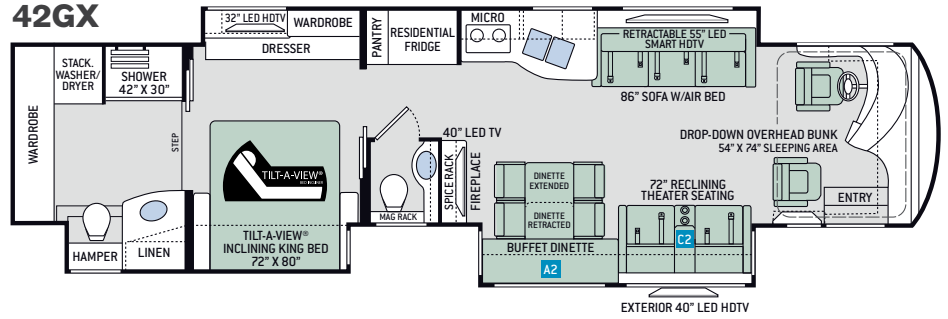
38SQ



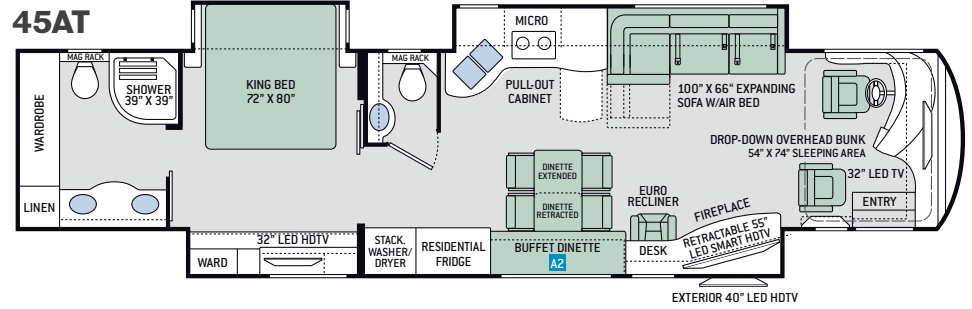
40DX



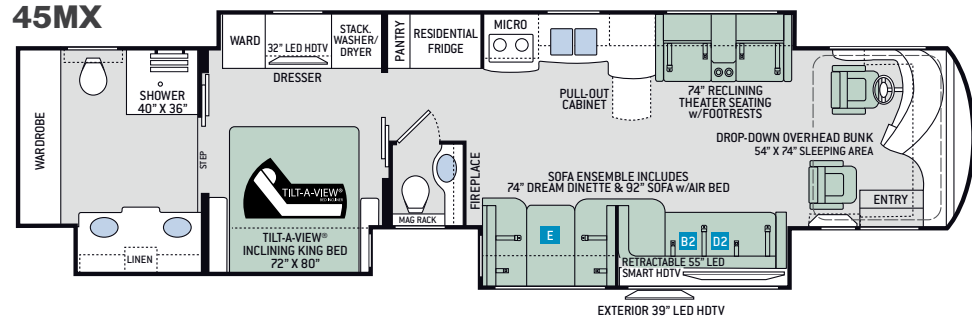
42GX



45AT



45MX

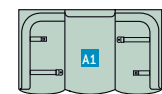


A home needs a strong foundation and that's especially true for the home that rolls down the road. We partnered with industry leaders, Freightliner® Custom Chassis and MORyde® International, to bring you this innovative building design. The Atlas Foundation™ is the premier building platform and substructure in the industry.

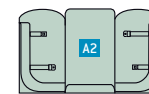
Specifications

	38SQ	40DX	42GX	45AT	45MX
Chassis	Freightliner XC-R	Freightliner XC-R	Freightliner XC-R	Freightliner XC-R	Freightliner XC-R
Gross Vehicle (GVWR)	38,600	38,600	45,660	45,660	45,660
Gross Combined (GCWR)	48,600	48,600	60,660	60,660	60,660
Wheel Base	252"	266"	266"	287"	287"
Exterior Length	39'-11"	41'-1"	43'-1"	44'-10"	44'-10"
Exterior Height (w/AC)	12'-9"	12'-9"	12'-9"	12'-9"	12'-9"
Exterior Width (w/o mirrors)	101"	101"	101"	101"	101"
Interior Height (living area)	84"	84"	84"	84"	84"
Awning Size	19'-8"	19'-8"	19'-8"	19'-8"	19'-8"
Fuel (gal)	150	150	150	150	150
Fresh/Waste/Gray Water (gal)	91 / 51 / 51	91 / 51 / 51	91 / 51 / 51	91 / 51 / 51	91 / 51 / 70
Water Heater (gal)	On Demand	On Demand	On Demand	On Demand	On Demand
Furnace (BTUs)	65,000	65,000	65,000	65,000	65,000
Exterior Storage Capacity (cu. ft.)	190	215	215	260	260

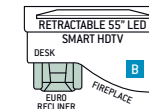
OPTIONS



OPTIONAL 74" DREAM DINETTE



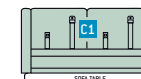
OPTIONAL 74" DREAM DINETTE



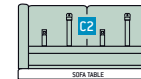
OPTIONAL EURO RECLINER w/DESKTOP & FIREPLACE



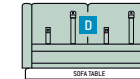
OPTIONAL EURO RECLINER & DESK



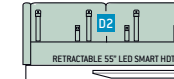
OPTIONAL 68" JACK-KNIFE SOFA



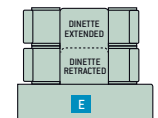
OPTIONAL 72" JACK-KNIFE SOFA



PASSENGER SIDE 69" SOFA W/AIR BED (EURO RECLINER w/DESKTOP & FIREPLACE REQUIRED)

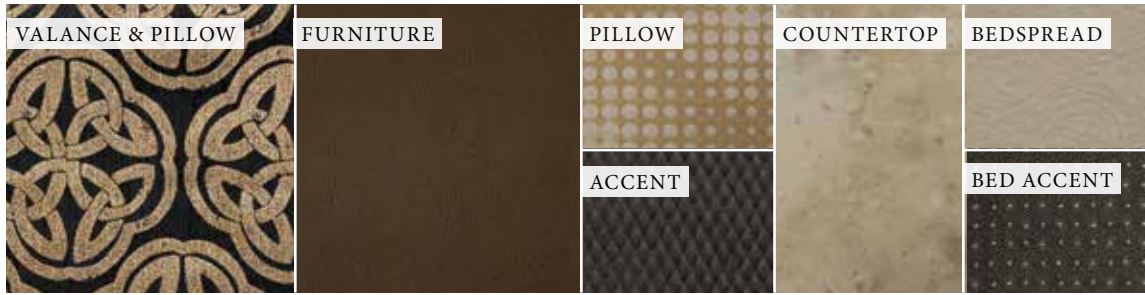


OPTIONAL 92" SOFA W/AIR BED



OPTIONAL BUFFET DINETTE

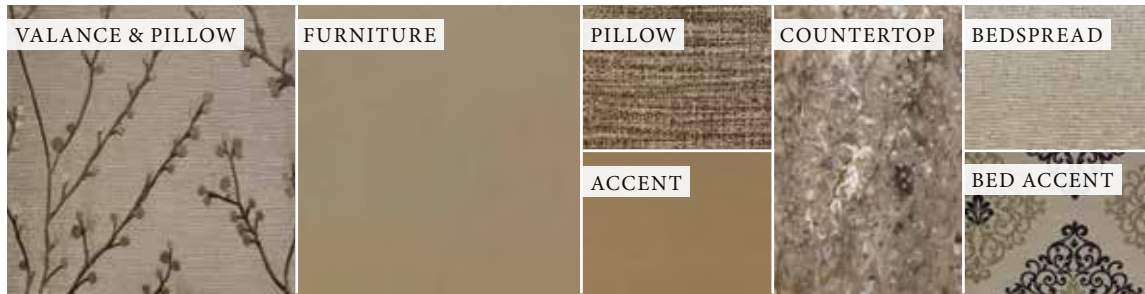
Interior Decor



BLACK DIAMOND



GOLD COAST



MOONSTONE



HIGH-GLOSS GLAZED MILAN



HIGH-GLOSS GLAZED NEWPORT



HIGH-GLOSS GLAZED PACIFIC

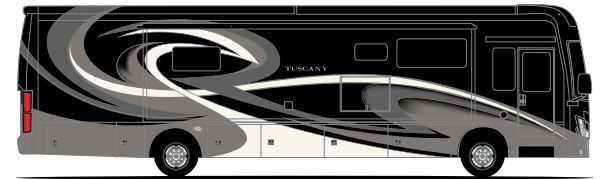


POLISHED PORCELAIN TILE FLOORING

Exterior Graphics



AVALON FULL-BODY PAINT



NOUVELLE FULL-BODY PAINT



SCANDIA FULL-BODY PAINT



TWILIGHT FULL-BODY PAINT



WATERFORD FULL-BODY PAINT



Thinking about buying a new coach? Have a question about one of our motorhomes? Trying to find a dealer near you? Our Coach Link support team is here to help you in your purchase of a new motorhome! This dynamic team focuses directly on helping you find the answers you need to help get you behind the wheel of one of our great new motorhomes. Call: 800.860.5658 or visit us online: thormotorcoach.com

Features

CONSTRUCTION & EXTERIOR

- Freightliner® XC-R Raised Rail Chassis with Atlas™ Foundation
- Side Radiator Cooling Package
- Cummins® ISL 8.9L Engine with 450HP & 1,250 lb.-ft. Torque
- 6-Speed Allison MH-3000 Automatic Transmission
- ZF® Independent Front Suspension with 60° Wheel Cut
- Full Air Front Disc & Rear Drum Anti-Lock Brakes
- Exhaust Brake (38SQ & 40DX)
- 2-Stage Jacobs® Brake (42GX, 45AT & 45MX)
- Sachs® Shock Absorbers
- 150-gallon Fuel Tank with Dual Fills
- One-Piece Fiberglass Front & Rear Caps
- Molded Fiberglass Roof
- Invisible Front Paint Protection
- Full-Body Paint Package with Gel-Coat Sidewalls
- Automatic Leveling Jacks with Touchpad Controls
- Side-Hinged Locking Compartment Doors with Electronic Locks
- Basement Pass-Through Storage
- Easy Slide Storage Tray
- Power Entry & Patio Awnings with Integrated LED Lighting
- Slideout Room Topper Awnings with Aluminum Covers
- Frameless Dual Pane Windows
- Patio Lights
- 10,000-lb. Trailer Hitch with 7-pin Round Connector (38SQ & 40DX)
- 15,000-lb. Trailer Hitch with 7-pin Round Connector (42GX, 45AT & 45MX)

AUTOMOTIVE & COCKPIT

- 10" Touchscreen Dash Radio with Bluetooth®, Rand McNally® RV GPS Navigation, CD/DVD Player, SiriusXM® Radio Capability & Back-Up Monitor
- Chrome Heated/Power Mirrors w/Integrated Side Cameras
- Push Button Start
- Primera™ by Ultrafabrics® Reclining/Swivel Power Adjustable Captain's Chairs (Passenger Seat has Electric Footrest)
- Driver & Passenger Overhead Storage Cabinetry

- VIP Tilt/Telescoping Smart Wheel
- Adjustable Brake & Accelerator Pedals
- Cruise Control
- Emergency Engine Start Switch
- Air Horns
- Fog Lights
- Power Solar & Privacy Shades on Windshield
- Manual Solar & Privacy Shades on Side Windows
- Electric Step Cover
- 295/80R 22.5" Michelin® Radial Tires with Aluminum Wheels
- Keyless Entry System & Compartment Door Locks
- Power Drop-Down Hide-Away Overhead Bunk with Cotton Cloud™ Mattress

AUTOMOTIVE & COCKPIT OPTIONS

- Remove Power Drop-Down Hide-Away Overhead Bunk with Cotton Cloud™ Mattress

INTERIOR

- Polished Porcelain Tile
- Ceiling Ducted Whisper Air™ Central Cooling System
- LED Lighting
- Decorative Ceiling Treatment with Mood Lighting
- High-Gloss Glazed Cabinetry with Solid Wood Raised Panel Cabinet Doors & Nickel Finish Hardware
- Window Solar & Privacy Shades
- Electric Fireplace with Remote Control (38SQ, 42GX, 45AT & 45MX)
- Primera™ by Ultrafabrics® Furniture
- Sofa & Reclining Theater Seat with Footrest (38SQ)
- Driver Side Sofa with Air Bed (40DX & 42GX)
- Reclining Theater Seating with Footrests (40DX, 42GX & 45MX)
- Expanding Sofa with Air Bed (45AT)
- Euro Recliner, Desktop & Electric Fireplace with Remote Control (45AT)
- Ensemble with Sofa & Dream Dinette Booth® (45MX)
- Buffet Dinette with Four (4) Chairs – Includes Two (2) Folding

INTERIOR OPTIONS

- Euro Recliner & Desktop (45MX)
- Euro Recliner, Desktop & Electric Fireplace with Remote Control (40DX)
- Driver Side Sofa w/Air Bed (45MX)
- Passenger Side Sofa w/Air Bed – Euro Recliner, Desktop & Electric Fireplace Option Required (40DX)
- Jack-Knife Sofa (40DX & 42GX)
- Dream Dinette® Booth (40DX, 42GX, 45AT & 45MX)

KITCHEN

- 20 cu. ft. Stainless Steel Residential French Door Refrigerator with In-Door Ice & Water Dispenser
- Electric Induction Cooktop
- 1.9 cu. ft. Stainless Steel Over-the-Range Convection Microwave Oven
- Residential Dishwasher Drawer-Style
- Chrome Pull-Out Wire Basket (42GX & 45AT)
- Solid Surface Countertops & Sink Covers
- Large Double Bowl Stainless Steel Sink & Single Handle Faucet w/Pull-Down Sprayer
- Decorative Tile Backsplash
- 12-volt Attic Fan with Cover & Remote Control

BEDROOM & BATHROOM

- Denver Mattress® Pillowtop King Size Bed
- Denver Mattress® King Size Bed with Tilt-A-View™ Inclining Bed Mechanism (40DX, 42GX & 45MX)
- Bedspread with Throw Pillows
- Ceiling Fan in Bedroom
- USB Charging Ports in Nightstands
- Porcelain Toilet
- Residential Tile Shower with Teak Shower Seat & Glass Door
- Decorative Tile Backsplash in Bathroom
- 12-volt Attic Fan with Cover in Bathroom

ENTERTAINMENT

- Retractable 55" LED Smart HDTV in Living Area
- 40" LED HDTV in Living Area (40DX & 42GX)

- 32" LED HDTV in Cockpit Overhead (38SQ, 45AT & 45MX)
- JBL® Sound Bar with Bluetooth®
- Sony® Blu-Ray DVD Player in Living Area & Bedroom
- 32" LED HDTV in Bedroom
- Exterior 40" LED HDTV & Sound Bar with Bluetooth
- Cable TV & HDMI Video Ready
- Winegard® Connect 4G/WiFi System

ELECTRICAL & PLUMBING

- Cummins Onan® RV QD 10000 Diesel Generator on Power Slideout
- Automatic Generator Start
- 50-amp Shoreline Power Cord & 12-volt Retractable Cord Reel
- 2800-watt Pure Sine Inverter/100-amp Converter
- Triple 15,000 BTU Low-Profile Ducted Air Conditioners with Three (3) Heat Pumps
- AC Condensation Drainage System
- Energy Management System
- Multiplex Wiring Control System with 7" Screen & WiFi App
- 200-watt Solar Charging System with Power Controller
- Six (6) Auxiliary House Batteries
- Battery Disconnect Switch
- Exterior GFCI Recept
- Enclosed & Heated Holding Tanks
- E-Z Flow Water Panel with Whole-House Water Filtration
- Black Tank Flush System
- Outside Shower
- Stackable Washer & Dryer
- Central Vacuum System with Toe-Kick Dustpan
- Aqua-Hot® 400D Hydronic Furnace & Water Heating System



IMPORTANT—PLEASE READ: This brochure reflects product design, fabrication, material, components and specifications at the date of printing, which date is disclosed below. Please visit us online at ThorMotorCoach.com or consult with your selling dealership for the latest in standards, options, specification and technical information. Photographs in the brochure may depict optional equipment or may only be available in certain floor plans. Components, appliances and the chassis may have been manufactured in a calendar year before the vehicle's designated model year. All capacities are approximate. The actual length of the vehicle may differ from that indicated in the brochure due to variances in the manufacturing processes and/or installed components. All dry weights are based on standard model features and do not include optional features or equipment. Component part and appliance manufacturers issue limited warranties covering portions of the vehicle not covered under the limited warranty we issue. Copyright Thor Motor Coach, Inc. © OH 09/18/17

YOUR LOCAL THOR MOTOR COACH DEALER



Made to fit.

thormotorcoach.com/tuscany



P.O. Box 1486, Elkhart, IN 46515 Sales Department: 800.860.5658 Customer Service: 877.855.2867